



Sea Rocket



Florida Native Plant Society ~ Sea Rocket Chapter ~ Serving Central & North Brevard County

September 2015

The purpose of the Florida Native Plant Society is to promote the preservation, conservation, and restoration of the native plants and native plant communities of Florida.

~ Sea Rocket ~ Board of Directors

President

Lois Harris

lois6459@att.net

Vice President

Armand De Flippo

armanddf@rcn.com

Treasurer

Karin Biega

karin@bocabanana.com

Secretary

David Beiga

db453@bocabanana.com

Chapter Representative

Greg Hendricks

gatorgregh@gmail.com

Committees

Membership

Education/Outreach

Shari Blissett-Clark

jclark109@cfl.rr.com

Nursery

Lois Harris

lois6459@att.net

Hike Leader

Paul Schmalzer, PhD

paul.a.schmalzer@nasa.gov

Newsletter

David Humphrey

brevcracker@gmail.com

Hospitality

Vacant at this time

What is that fungus among us?

Would you like to know what that “thing” is that you find growing on your lawn and other places that you explore?

The 10 easy ID's

Learn about all 10 ID's

September 23rd at 6:30

Enchanted Forest Sanctuary

Free to all, and all for free.

Everyone is welcomed.



"Dr. Jay Barnhart first became interested in wild mushrooms more than 35 years ago while he was making house calls as a general practitioner in rural Maryland. He is a member of the North American Mycological Association, whose members are referred to as "Mycophiles", aka "Fungus Lovers." Jay prefers to be referred to as an "avid mushroom hobbyist" rather than a "fungus expert."

Dr. Barnhart is retired from his second career as Dade County Medical Examiner (Miami CSI.) Jay's favorite activities include fishing, playing the piano, and giving presentations about Florida's local natural treasures. Jay has received certification in the Florida Master Naturalist Program and is a frequent guide at the Enchanted Forest, Sebastian Inlet State Park, and the Barrier Island Preserve."

September Places To Go, Things To Do!

(Note: All future planning can change presently. If in doubt, verify the date and times are accurate.)

- Every Saturday: GUIDED NATURE HIKES - 10:00am** - For information call 321-264-5185.
- Every Wednesday: FNPS Sea Rocket Chapter Nursery Workday—9am-12noon**, email Lois at lois6459@att.net for further info and schedule.
- September 3 5:00 PM at the Viera Commission Chambers!** Help OUR lagoon environment! For the water, wildlife, our property values and the next generation. You don't have to speak - **SHOWING UP MAKES A DIFFERENCE!**
- September 5 Invasive Exotics** 11:00 AM to Noon at Sams House on Merritt Island. See the Facebook page at <https://www.facebook.com/samshousepineisland?fref=ts>
- September 12 Pollinator Garden Workday** from 10:00 AM to Noon. Sams House on Merritt Island.
- September 12 Enchanted Forest Butterfly Garden Workday.** Start at 9 AM
- September 23 Monthly Sea Rocket meeting** at the Enchanted Forest 6:30 PM. Dr. Jay Barnhart, retired forensic pathologist and avid amateur mycologist will be giving a visual presentation entitled **“WHAT IS THIS FUNGUS AMONG US? THE 10 EASY ID’S.”**, based on local observations in the Space Coast Area. Learn about Mushroom Facts, Fables, Folklore and Fun in this narrated interactive slide show. **Be sure to bring a potted native plant to the meeting. Go home with a different plant**
- September 25, 26 Florida Wildflower Symposium**, Join our partner, the Florida Wildflower Foundation, at their annual Florida Wildflower Symposium, to be held at Leu Gardens in Orlando. See page 7 for more details and how to register.
- September 26 National Public Lands Day, and Native Plant Sale.** Enchanted Forest Butterfly Garden Workday. Start at 9 AM to 12 PM. The Enchanted Forest will be of serving pizza to all the volunteers for lunch. There will plenty of work for all. Sea Rocket will be offering native plants for sale at this time.
- September 26 Helen and Allan Cruickshank Sanctuary Field Trip.** Hosted by Dr. Schmalzer. See page 5 for all the details and directions.
- September 28 thru October 3 Pollinator Appreciation Week—**More details will be made available in a separate mailing.

Please send calendar items to David Humphrey at brevcracker@gmail.com

For a comprehensive view of Sea Rocket activities go to www.FNPS.org; events, “searocket”.

Don't forget to check out other EEL Sites and volunteer organizations for more Free Family activities.

- **Enchanted Forest Facebook:** <https://www.facebook.com/EnchantedForestSanctuary?fref=ts>
- **SAMS HOUSE :** <http://www.brevardcounty.us/EELProgram/Home>
- **Barrier Island Center:** <http://www.brevardcounty.us/eelprogram/areas/barrierislandsanctuary>
- **Keep Brevard Beautiful:** <http://keepbrevardbeautiful.org/>

Sea Rocket Chapter Participates on a State Land Review

By: Greg Hendricks, Florida Master Naturalist, Merritt Island, FL

Every five years the Office of Environmental Services, Division of State Lands conducts land management reviews to determine how well state lands are being managed by state agencies. On July 15th and 16th the Sea Rocket Chapter was invited to participate on a land management review team as the representative conservation organization. Others participating on the review included the Florida Department of Environmental Protection (FDEP), Brevard County EEL management staff, FWC, Indian River Soil & Water Conservation District, Florida Forest Service, The Nature Conservancy, and staff from the Florida Park Service.



The state land under review was the St. Sebastian River Preserve State Park located in Fellsmere, FL. This 21,956 acre tract has been managed by the Florida Park Service since 2004. This large property is located in both Brevard and Indian River Counties and is bisected by I-95 north & south and the C-54 Canal east and west into four quadrants. Park goals include restoration and maintenance of native plant communities, protection and enhancement of flora and faunal, and to provide public access to recreational activities such as hiking, nature study, horseback riding, primitive camping, and enjoyment of nature.

Throughout the day we made several stops at various ecological sites that included wet, mesic and scrubby flatwoods. Bay and cypress swamps, and excellent examples of coastal scrub communities that supported the Florida Rosemary (*Ceratiola ericoides*). One of the most impressive sites we visited were Longleaf Pine sandhills that were providing excellent habitat for the federally endangered Red-Cockaded Woodpecker (RCW). Through the diligent efforts of Park Service staff, RCW colonies have increased

from 6 in 2005 to 14 in 2015. This is a remarkable example of providing quality habitat for this imperiled species.

Florida Park Service staff provided examples of strategic applications of mechanical brush management, prescribed burning, and hydrological restoration by filling 22 miles of surface water ditches that were installed prior to the property becoming a State Park. Through the implementation of these land management practices and maintaining a constant vigil on controlling exotic invasive species, the St. Sebastian River Preserve State Park is a prime example of state managed lands in our area.

One of our last stops included a hike deep into a cypress dome swamp. Although the water level was surprising low for this time of year, this ecological community was in good health and functioning quite well. I am happy to report that despite the continued impacts to native Bromeliads across Florida from the Mexican Bromeliad Weevil, Bromeliads were found throughout the swamp and appeared to be in very good health. When you can, treat yourself to a visit of the St. Sebastian River Preserve State Park.





National Public Lands Day

Saturday, September 26, 9am - 12pm

Enchanted Forest Sanctuary



Workday & Native Plant Sale!

Join EEL staff and FNPS for a volunteer workday in the gardens and grounds of the Enchanted Forest Sanctuary.

Native Plant Sale
Sea Rocket FNPS
10am - 3pm



Please wear closed-toed shoes, a hat, and sunscreen.



Find us on
Facebook & Twitter!



444 Columbia Blvd., Titusville, FL 32780 ❖ 321.264.5185 ❖ www.eelbrevard.com



Helen and Allan Cruickshank Sanctuary Field Trip Announcement

Hosted by Dr. Paul Schmalzer

Saturday September 26, 2015 from 0900-1200

This sanctuary is a joint acquisition of the Brevard County Environmentally Endangered Lands Program and the State of Florida, acquired in 1995 with later additions. Vegetation is pine flatwoods, oak scrub, and freshwater depression marshes. Prescribed burning, mechanical treatment of fuels, and thinning of pines have been done to restore habitat conditions. There has been a positive response of the Florida Scrub-Jay population to habitat restoration. Several rare plants occur in the sanctuary.

Directions: Central Rockledge just west of US Highway 1, 360 Barnes Boulevard.

From I-95: Take Fiske Blvd Exit 195. At the intersection just north of I-95, go east on Barnes Boulevard 2.4 miles to the Sanctuary entrance and small parking area.

From US-1: Turn west onto Barnes Blvd and travel 0.5 miles. The Sanctuary entrance is on the north side of the road.

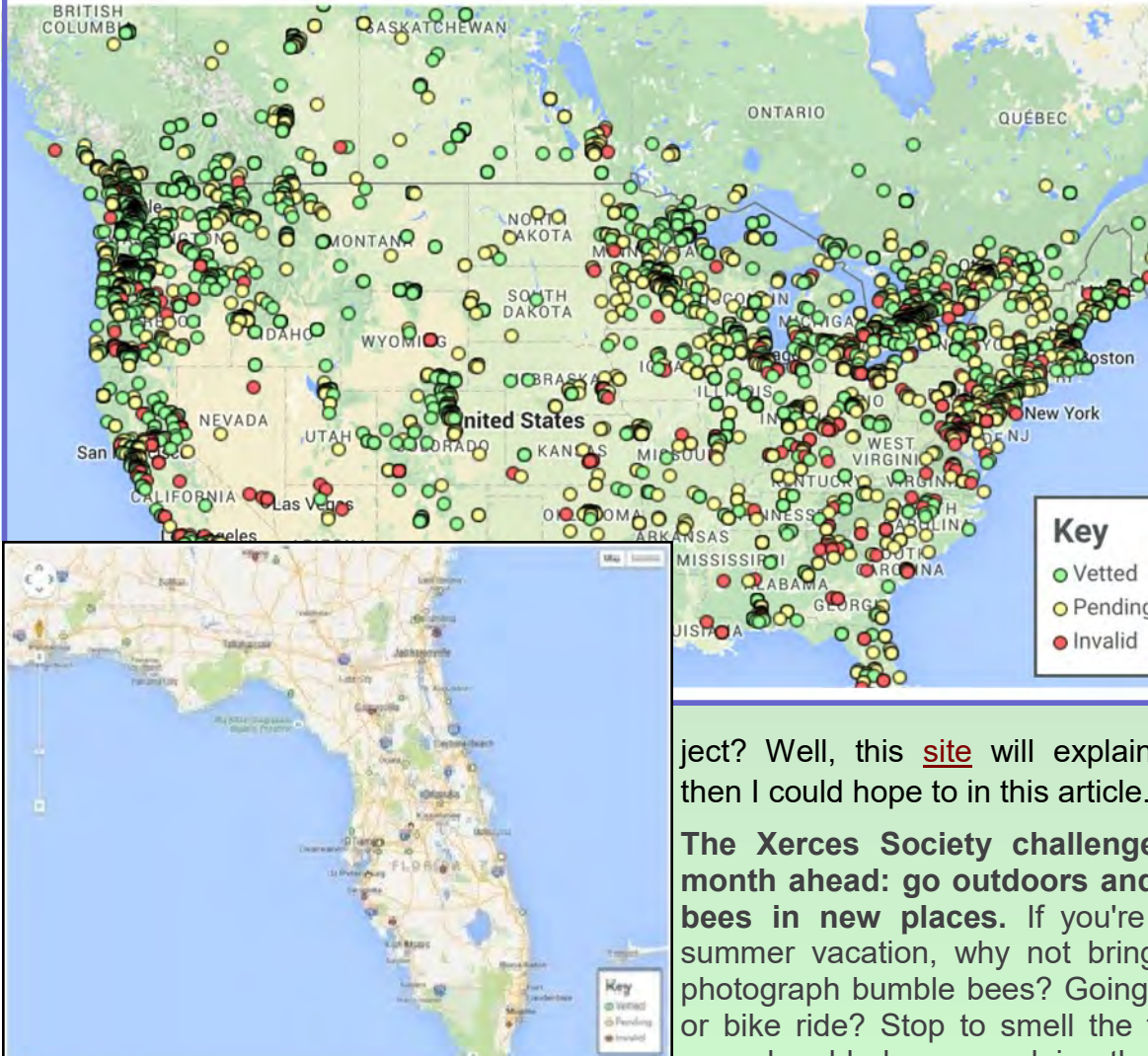
Bring hat, sunscreen, water, and insect repellent.



Citizen Science to the rescue

Bumble Bee Watch Update

August 2015

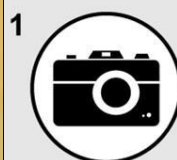


These two maps show where bumble bee observations have been made. To a large degree the data follows major population centers. A full map can be found [here](#). The goal for this project is a more even distribution. I've inserted a Florida map that I hope shows that there are a lot of opportunities to add data to the overall project.

What is the project? Well, this [site](#) will explain more thoroughly than I could hope to in this article.

The Xerces Society challenge for you in the month ahead: go outdoors and look for bumble bees in new places. If you're headed out on a summer vacation, why not bring the camera and photograph bumble bees? Going for a hike, paddle or bike ride? Stop to smell the flowers and see if bumble bees are doing the same. There is a wealth of information on the [Bumble Bee watch site](#).

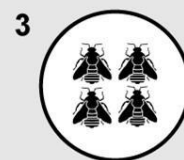
How to Submit a Sighting



Take a photo of a bumble bee



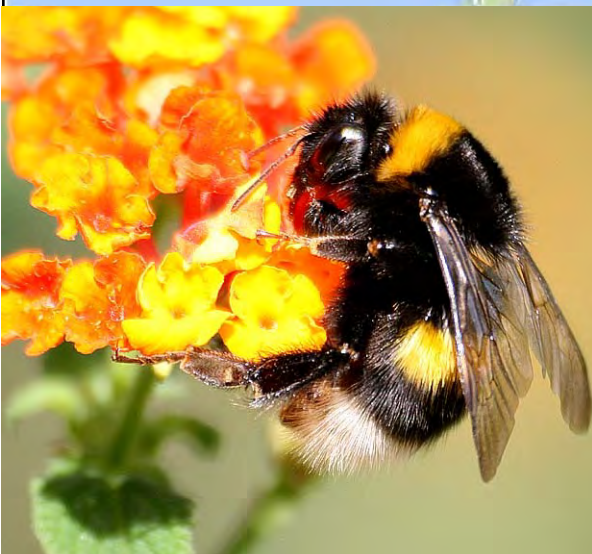
Log in and upload your photo



Identify your species



Sighting will be verified by expert



aron tanti

The 2015 Wildflower Symposium



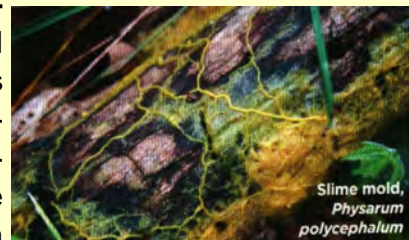
This is the only educational gathering of its kind, focusing exclusively on Florida's native wildflowers, their landscape uses, and their natural habitats. The theme of the seventh annual symposium is "Pollinators: Connecting the Dots," and features 30 presentations, walks, workshops and field trips, many of which will be lead by FNPS members. A plant sale will offer a wide variety of native beauties from Green Isle Gardens. Dinner on September 25 will feature keynote speaker J.C. Cahill, an experimental plant ecologist best known as lead scientist on the PBS Nature series documentary "What Plants Talk About." (If you missed him at the 2014 FNPS conference, you missed a real treat. This is your chance to see his interesting and entertaining presentation on plant behavior.) Visit

flawildflowers.org/events/2015-wildflower-symposium.html to register.

Plant Sale * Exhibitors * Field Trips * Presentations * Dinner at Leu Gardens

Slime Mold: what is it good for?

Slime mold, what is it good for? According to Samir Patel "It has an uncanny ability to solve **impossibly complex computational problems**". In terms even I can understand, it is very efficient at finding the shortest route to a



food source. Archaeologists are studying this effect (in miniature) to discover ancient Roman roads, long-lost to time. To do this, they put food sources in similar patterns, where they have found multiple ruins, in a Petri dish. The mold will route to the food, using many paths, but will retreat from all but the shortest routes. Using this miniature map archaeologists have compared the slime mold paths to actual known roads between ruins, with amazing accuracy. The slime mold and major military Roman roads follow the same route. Scientist hope this simple organism will help locate roads buried by time and upheaval.

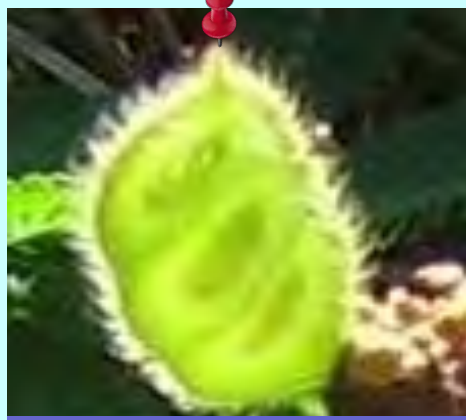
Slime Mold (*Physarum polycephalum*) taken from Archeology Magazine, July/August 2015, pp 22—by Samir Patel.

FEBRUARY 1st 2016

Call for Research Track Papers and Poster Presentations for 2016 FNPS Conference. The 2016 Florida Native Plant Society Annual Conference will be held in Daytona Beach, Florida, May 18-22, 2016. The Research Track of the conference will include presented papers and a poster session on Friday May 20 and Saturday May 21. Researchers are invited to submit abstracts on research related to native plants and plant communities of Florida including preservation, conservation, and restoration. Presentations are planned to be 20 minutes in total length (15 min. presentation, 5 min. questions). Abstracts of not more than 200 words should be submitted as a MS Word file by **email to Paul A. Schmalzer at paul.a.schmalzer@nasa.gov** by February 1, 2016. Include title, affiliation, and address. Indicate whether you will be presenting a paper or poster.

Community Corner

News for and about *your* Chapter



Mimosa Seed Pod "X-rayed"



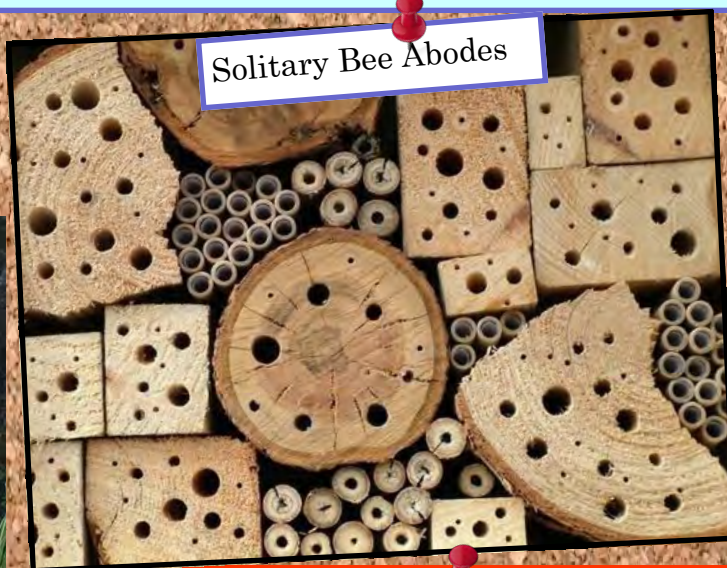
Mimosa Seed Pods

Mimosa Seed pods, the first I've seen, and I have a lot of mimosa, Full sun, and never mowed is the key to mimosa setting seed. I told Dr. Schmalzer about this and he said that it takes a lot of energy to make seed. ~ Dave



Sea Rocket keeps getting better!

This is the trellis Lois built. It is visible from the building and is very compatible with the surrounding woods.



Solitary Bee Abodes

A coming schedule change is fast approaching. The November meeting **only** will be on the **THIRD THURSDAY of November**, we will be meeting with the Friends of Enchanted Forest. **Howard Ferris will be presenting his wild adventures in Florida.** Moving the November meeting is a yearly event, due to the proximity to Thanksgiving. **Mark your calendars for November. 19th, 2015.**

Science is Catching up with Ancient Gardening Knowledge.

California is having a time of it, with low rain fall, low reserves, and high usage of their precious water supply. As in the 30's, millions of acres of native buffalo grass (*Buchloe dactyloides*) was plowed under for a cash crop, wheat. When the weather pattern changed, as it does, the crops failed, and left millions of acres naked to the winds on the plains. The dust bowl had begun. What farmers didn't think about then, growers are learning now, Use native plants to revive the soil and save water. California growers have been pushing their crops with abundant water and wide spread use of, fertilizers, herbicides, and pesticides, to produce more, faster. What growers are learning is that letting the land take care of itself, through adding real organics, and allowing the build up of microbe activity, can save growers thousands of gallons of water per acre. By letting nature take care of her own the ground retains more water and requires less. The organics and microbiology keep the soil loose so water penetrates easier and roots can grow deeper.

One California grape grower is using what is called, "Dry Farming" for his grapes. He claims that letting the vine find water naturally increases the life of the vine, and enhances the flavor and complexity of the grape. The tonnage per acre is reduced, but the quality of the grape is so much better he can sell them at a higher price. A balance between nature and man has been met by letting nature do it's thing.

Every plant needs water. But drought-resistant varieties need only dainty sips once they're established, making them perfect for low-rainfall areas and low-energy gardeners. Native plants used correctly will reward you with years of beauty at little or no cost to you.

- Dave

Hosting the Sea Rocket Newsletter since 2001;

www.NBBD.com

North Brevard Business & Community Directory

David N. Rich

Peak Performance Co.

4030 Winter Terrace, Titusville, FL 32780

321-267-7367

DavidNRich@gmail.com

www.AboutTitusville.com

Tulinda's Garden

Garden & Landscape Design
Horticultural Consultation

Linda Gombert

www.TulindasGarden.com

Phone 321-639-4017

Mobile 321-446-9338

Teach. Grow. Live. 
Naturewise
Naturally.

**Florida Native & Edible Plants,
Landscape Consultations,
Workshops, & More!**

www.naturewiseplants.com

321-536-1410



**Florida Native Plants
Organic Vegetables & Herbs**

7619 Henry Avenue
W. Melbourne, FL 32904
321-729-6857

Maple Street Natives

info@maplestreetnatives.com

www.maplestreetnatives.com

www.facebook.com/maplestreetnatives

green images

Florida Native Landscape Plants

**1333 Taylor Creek Road
Christmas, Florida 32709**

407-568-1333

greenimage@aol.com

The Enchanted Forest Sanctuary Education Center

444 Columbia Blvd, Titusville, FL 32780 321-264-5185

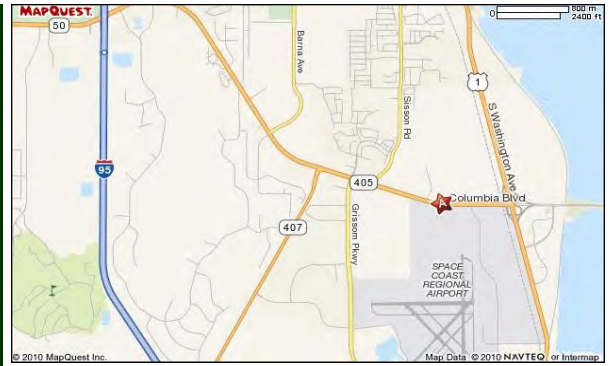


Driving Directions to the Sanctuary:

From I-95 Northbound: take SR-407 Exit 212 east 2.7 miles to SR-405 intersection. Turn right onto SR-405 and go east 1.9 miles (the Sanctuary entrance is on the left 0.4 miles past Sisson Road)

From I-95 Southbound: take SR-50 Exit 215 east. Turn left onto SR 50 and turn right onto SR-405 (2nd light) Travel 3.6 miles (the Sanctuary entrance is on the left 0.4 miles past Sisson Road)

From U.S. HWY 1: go west 0.5 miles on SR-405 in south Titusville. Sanctuary entrance is on the right.



Florida Native Plant Society

For membership information, address change: P. O. Box 278, Melbourne, FL 32902-0278

Phone: 321-271-6702; Fax: 321-951-1941; Email: Info@fnps.org/www.fnps.org

Sea Rocket Chapter mailing address: 444 Columbia Blvd, Titusville, FL 32780

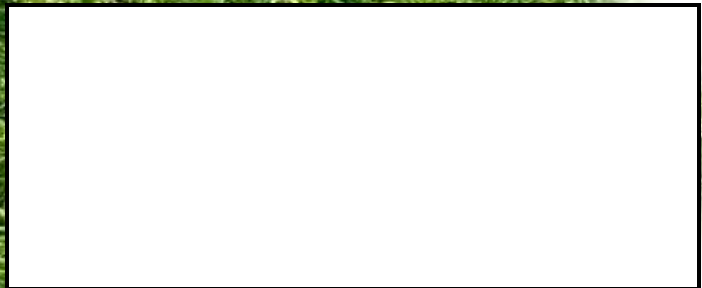


The October Program
"Edible Florida" with Peggy Lantz,
A true Florida Native as well as
renowned naturalist and author.
www.fnps.org



Sea Rocket Chapter

444 Columbia Blvd,
Titusville, FL 32780



GO GREEN! RECEIVE YOUR NEWSLETTER VIA EMAIL AND SAVE SOME GREEN! GO GREEN!