

Enchanted Forest Sanctuary

Management & Education Center

444 Columbia Boulevard, Titusville, FL 32780

Phone: 321.264.5185 Fax: 321-264-5190

Center Hours

Tuesday through Sunday

9:00 a.m. to 5:00 p.m.

The Center is closed on Mondays, Thanksgiving Day, Christmas Eve Day, Christmas Day, and New Year's Day.

To Protect the Sanctuary

Pets, Bikes, and Smoking are Prohibited



Travel Directions

From I-95 Northbound

Take SR-407 Exit 212 east 2.7 miles to the SR-405 intersection. Turn right onto SR-405 and go east 1.9 miles (the Sanctuary entrance is on the left 0.4 miles past Sisson Road).

From I-95 Southbound

Take SR-50 Exit 215 east. At the intersection turn right onto SR-405. Travel 3.6 miles (the Sanctuary entrance is on the left 0.4 miles past Sisson Road).

From U.S. Highway 1

Go west 0.5 miles on SR-405 in South Titusville. Sanctuary entrance is on the right.

The Environmentally Endangered Lands Program's mission is to protect and preserve biological diversity through responsible stewardship of Brevard County's natural resources.








Visit www.eelbrevard.com

Brevard County
Board of County Commissioners and
Brevard County Parks & Recreation

Discover the...

Enchanted Forest Sanctuary Management & Education Center



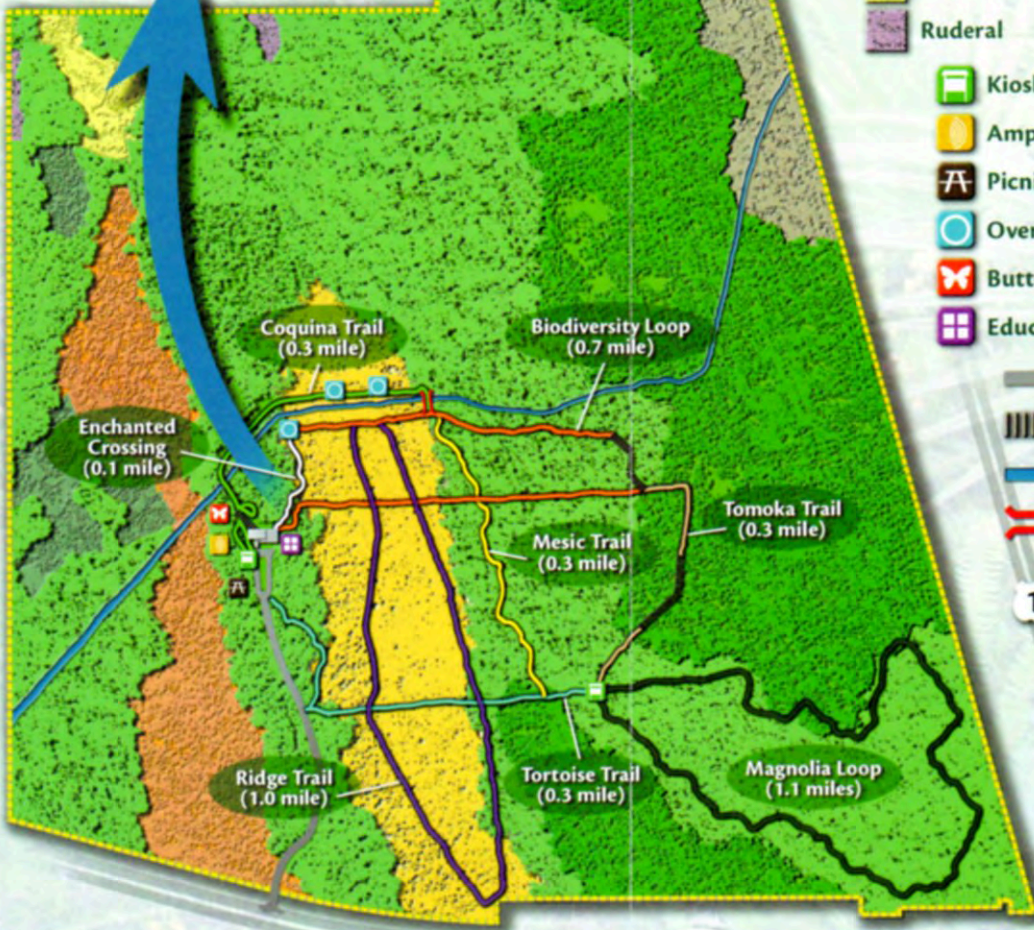
-  Interactive Exhibits
-  Hiking Trails
-  Educational Programs
-  Volunteer Opportunities
-  Wildlife Viewing

Brevard County
Environmentally Endangered Lands Program
 www.eelbrevard.com

Enchanted Forest Sanctuary Trail Map



- Mesic Hammock
- Hydric Hammock
- Oak Scrub
- Scrubby Flatwoods
- Basin Swamp
- Basin Marsh
- Depression Marsh
- Ruderal
- Kiosk
- Amphitheater
- Picnic Area
- Overlook
- Butterfly Garden
- Education Center
- Entrance Road
- Boardwalk
- Canal
- Bridge



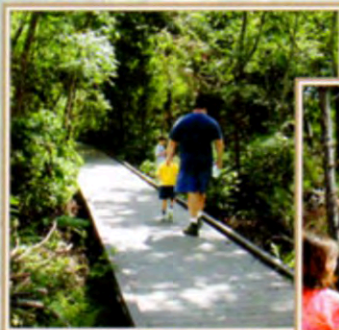
405

The Sanctuary

The Enchanted Forest Sanctuary was the first property purchased by the Environmentally Endangered Lands (EEL) Program and is the EEL Program's "Flagship" sanctuary. The 462-acre Forest is part of a sanctuary network the EEL Program is establishing throughout Brevard County.

Located in the southern limits of the City of Titusville, the Enchanted Forest Sanctuary preserves a diversity of the natural habitats found in Brevard, and offers over 4-miles of hiking trails to allow visitors to enjoy the natural beauty of the Sanctuary.

Wildlife observation, nature photography, and hiking are popular recreational activities in the Sanctuary. The Management & Education Center interprets the Sanctuary's unique natural features for visitors of all ages and abilities.



Living Heritage

There are five basic habitat types in the Enchanted Forest Sanctuary: oak scrub, mesic and hydric hammock, basin swamp, and scrubby flatwood. Wildlife species found here include the Eastern indigo snake, Florida scrub lizard, gopher tortoise, white-tailed deer, and bobcat.



There is also a wonderful wealth of plant life in the Sanctuary as both temperate (northern) and subtropical (southern) species grow here together.

The Hernandez - Capron Trail and the Addison/ Ellis Canal are outstanding cultural resources. These features tell stories that offer visitors a peek into Brevard's unique history.

The Center



The Enchanted Forest Sanctuary Management and Education Center provides interpretive educational exhibits, a hands-on discovery room, reference library, gift shop, and restrooms. In

addition, the Center features an exterior screened porch and walkway, an outdoor amphitheater, butterfly garden, picnic area, and the Enchanted Crossing—an interpretive nature trail with a stabilized surface for universal accessibility.

A primary goal for the Center is to be a model of universal accessibility to outdoor areas. All features of the Center and the Enchanted Crossing trail are focused on accessibility for all people regardless of age or ability.

With its ideal arrangement for field trips, research projects, and teacher training seminars, educational opportunities abound at the Enchanted Forest Sanctuary Management and Education Center!



Volunteers

Volunteers are essential to the Enchanted Forest Sanctuary. Join in the fun while you help preserve the Sanctuary's natural beauty for the future.

Here are just some of the ways you can become involved and share your talents...

Guided Hikes
Greeting Visitors
Hosting
Environmental Education
Interpretive Exhibits
Sanctuary Monitoring
Exotic Plant Control
Maintenance and Repairs
Landscaping
Photography
Grant Writing
Newsletter

...the possibilities are endless!



Environmentally Endangered Lands

The EEL Program was established in 1990 to protect the natural habitats of Brevard County by acquiring environmentally sensitive lands for conservation, passive recreation, and environmental education. This initiative made conservation history when citizens voted to tax themselves for acquisition and maintenance of Brevard's natural areas.

Connected Lands Provide a Bridge for Biodiversity...

Visitor Guidelines

- ☼ Do not feed, disturb, or harm wildlife
- ☼ All plant and animal life is protected
- ☼ Parking in established areas only—do not block roads or gates
- ☼ ATVs and tracked vehicles prohibited
- ☼ Pets, smoking, alcohol, and firearms are prohibited
- ☼ Stay on the trail for personal safety and protection of the natural environment

Conservation Lands Work To...

- ☼ Protect rare and endangered species
- ☼ Improve wildlife habitat
- ☼ Protect aquifer recharge areas
- ☼ Provide passive recreation
- ☼ Serve as living classrooms
- ☼ Improve our health and quality of life
- ☼ Benefit our local economy

